

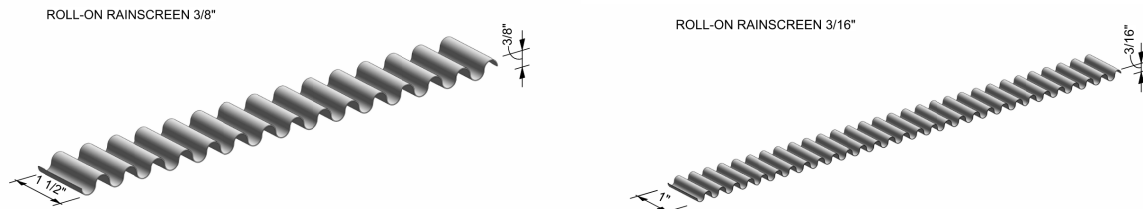


# Roll-On Rainscreen™

## Installation Instructions

### Product Description:

Roll-On Rainscreen™ is a non-structural corrugated aluminum strip that can be installed vertically or horizontally to create a drained & back-ventilated rainscreen cavity.



### Tools needed:

- Level
- Chalk Line/Laser
- Tin Snips
- Hammer/Nail Gun
- Cordless Drill
- Tape Measure

### Fasteners needed:

- Hot Dip Galvanized Smooth Shank Nail

### Recommendations:

- Seal all fasteners
- Some types of siding require predrilling the siding to avoid damaging the siding from kickback/blowout
- Refer to your siding manufacturer for requirements regarding siding attachment

### Job Site Safety & Preparation:

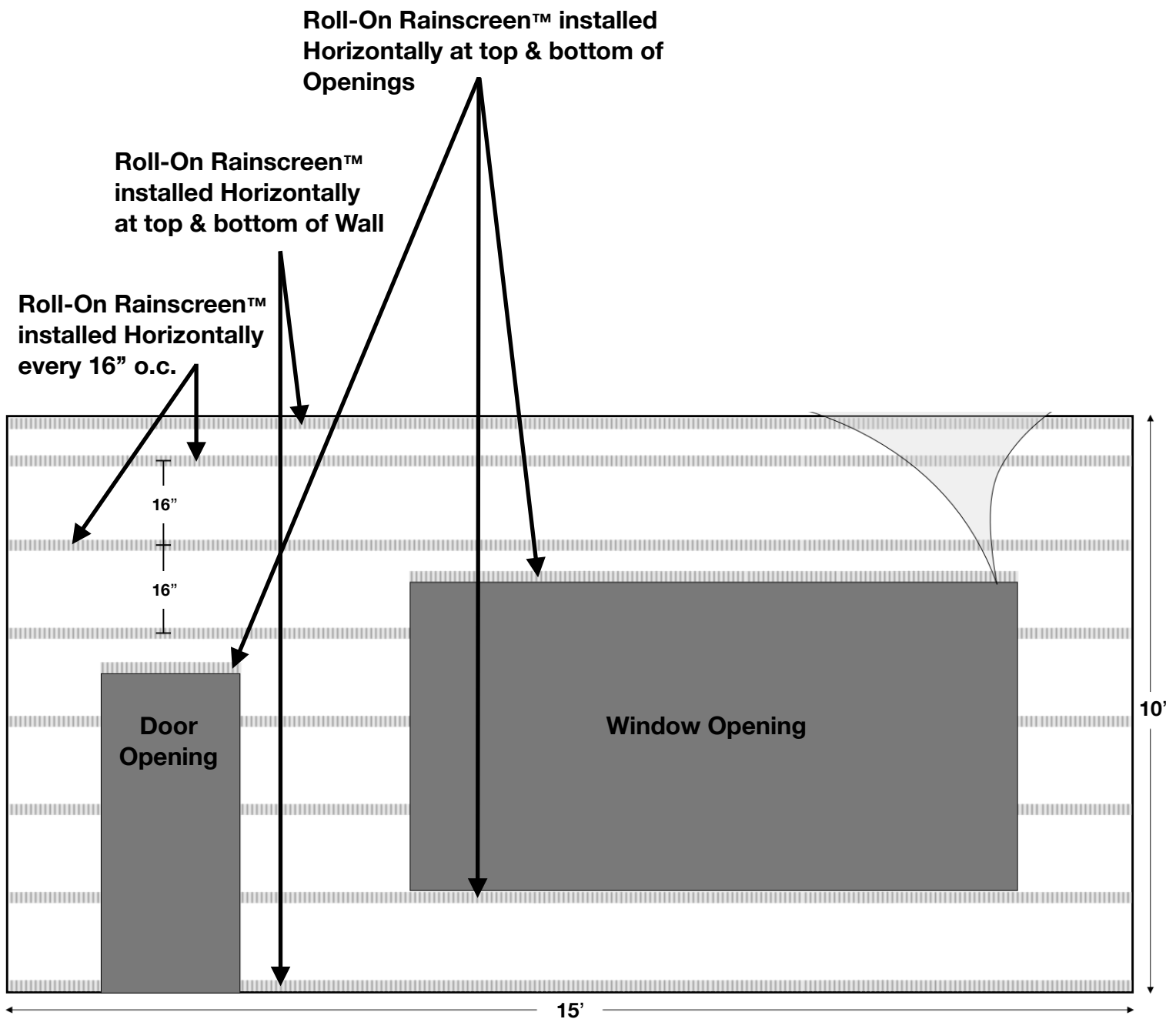
Always wear eye protection and gloves. Make sure the wall is free from any structural defects and all membranes or flashing are properly installed per manufacturers requirements. Roll-On Rainscreen™ should only be applied to OSB/Plywood or over code compliant insulation up to 1" thick maximum. Before installation, check with your local building code requirements and read all manufacturers installation instructions.

### IMPORTANT:

Failure to follow AlBuild Systems written installation instructions in accordance with project engineer/architect/owner recommendations and applicable building codes may violate local laws, affect building envelope performance, and void warranty coverage. Every project is unique and the full details of each project should be taken into consideration on a project-specific basis by the architect, engineer, contractor, and installer along with these general installation instructions. AlBuild Systems is not responsible for any moisture damage or structural failure within the wall assembly. Failure to comply with all health and safety regulations when cutting and installing this product may result in personal injury. AlBuild Systems is not responsible or liable for any injuries or loss of any kind during use of any of AlBuild Systems products.



# HORIZONTAL INSTALL OVERVIEW



# HORIZONTAL INSTALLATION STEPS

## Installing Bottom Weep Screed/Perforated J-Channel

\*\*Both options work to keep bugs out of the cavity without restricting drainage, and can be sourced from local supply depots

\*\*Perform these steps above windows/openings as well

- Measure & cut a weep screed/perforated j channel to the length of the wall
- Align bottom edge of the weep screed/perforated j channel with the bottom edge of the wall/sheathing
- Nail every 16" into the framing
- Measure & cut a strip of ROR to the length/span of the wall
- Install first ROR strip over top of weep screed/perforated j channel
  - \*make sure the **bottom** edge of ROR is lined up with the angle on the weep screed, or inserted into the perforated j channel
- Pull ROR strip taut & fasten every 16" into the framing



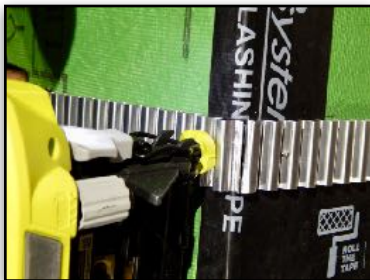
## Installing Roll-On Rainscreen™ (ROR) Horizontally

- Measure & cut a strip of ROR to the length/span of the wall
- Measure 16"-24" up from the top of your previous ROR strip and snap a chalkline
- Align top edge of ROR strip with chalkline
- Pull ROR strip taut & fasten every 16" into the framing
- Repeat up the wall every 16"-24" oc

### Outside Corner - Horizontal Install

When two walls/elevations meet at an outside corner:

- Repeat ROR installation steps on one of the adjoining walls, ending at the corner
- Begin the connecting course of ROR on the adjoining wall at the corner where the initial course ends



### Inside Corner - Horizontal Install

When two walls/elevations meet at an inside corner:

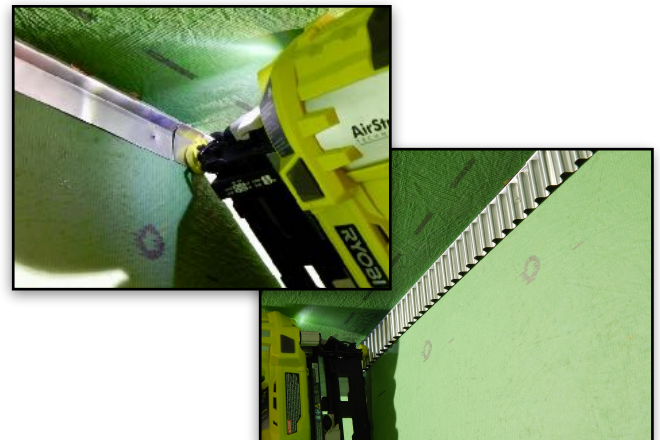
- Repeat ROR installation steps on one of the adjoining walls, ending at the corner
- Begin the connecting course of ROR on the adjoining wall at the corner where the initial course ends



## Installing Top Weep Screed/Perforated J Channel

\*\*Perform these steps below windows/openings as well

- Once you have reached the top of the wall, measure & cut a weep screed/perforated j channel to the length of the wall
- Align top edge of weep screed/perforated j channel with the top edge of the wall/sheathing (this will be inverted compared to the bottom application)
- Nail every 16" into the framing
- Install final ROR strip over top of weep screed/perforated j channel
  - \*make sure the **bottom** edge of ROR is lined up with the angle on the weep screed, or inserted into the perforated j channel
- Pull ROR strip taut & fasten every 16" into the framing



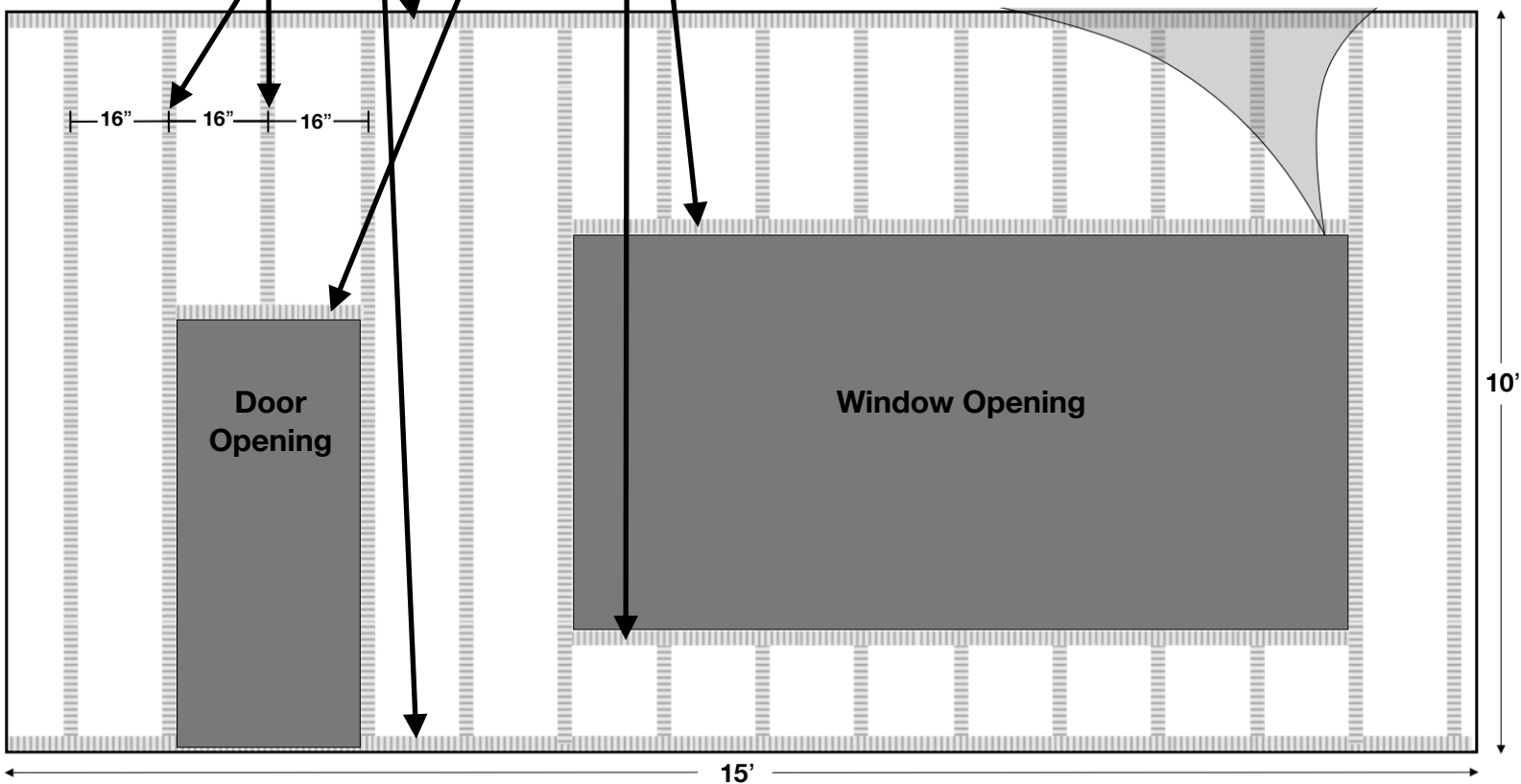


# VERTICAL INSTALL OVERVIEW

**Roll-On Rainscreen™ installed Horizontally at top & bottom of Openings**

**Roll-On Rainscreen™ installed Horizontally at top & bottom of Wall**

**Roll-On Rainscreen™ installed Vertically every 16" o.c.**



# VERTICAL INSTALLATION STEPS

## Installing Bottom Weep Screed/Perforated J-Channel

\*\*Both options work to keep bugs out of the cavity without restricting drainage, and can be sourced from local supply depots

\*\*Perform these steps above windows/openings as well

- Measure & cut a weep screed/perforated j channel to the length of the wall
- bottom edge of the weep screed/perforated j channel with the bottom edge of the wall/sheathing
- Nail every 16" into the framing
- Measure & cut a strip of ROR to the length/span of the wall
- Install first ROR strip over top of weep screed/perforated j channel
  - \*make sure the **bottom** edge of ROR is lined up with the angle on the weep screed, or inserted into the perforated j channel
- Pull ROR strip taut & fasten every 16" into the framing



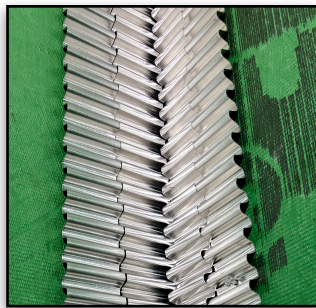
## Installing Roll-On Rainscreen™ (ROR) Vertically

- Measure & cut a piece of ROR to the length of the wall
- Pull ROR strip taut and fasten every 16-24" into the framing
- Measure 16" left/right from your previous ROR strip and snap a new chalkline
- Align edge of ROR with chalkline
- Pull ROR strip taut & fasten every 16"-24" into the framing
- Repeat previous steps continuing installation of ROR across wall, every 16"

### Inside Corner - Vertical Install

When two walls/elevations meet at an inside corner:

- If using aluminum trim, install 2 sections of ROR (1 on each corresponding wall)
- If using 1x4 trim, install 4 sections of ROR (2 on each corresponding wall)



### Outside Corner - Vertical Install

When two walls/elevations meet at an outside corner:

- If using aluminum trim, install 2 sections of ROR (1 on each corresponding wall)
- If using 1x4 trim, install 4 sections of ROR (2 on each corresponding wall)



## Installing Top Weep Screed/Perforated J Channel

\*\*Perform these steps below windows/openings as well

- Once you have reached the top of the wall, measure & cut a weep screed/perforated j channel to the length of the wall
- Align bottom edge of weep screed/perforated j channel with the top edge of the wall/sheathing (this will be inverted compared to the bottom application)
- Nail every 16" into the framing
- Install final ROR strip over top of weep screed/perforated j channel
  - \*make sure the **bottom** edge of ROR is lined up with the angle on the weep screed, or inserted into the perforated j channel
- Pull ROR strip taut & fasten every 16" into the framing

