



**VENTCLAD™**  
Patent Pending

THE SIDING THAT SERIOUSLY ROCKS™

## PLANK SIDING

### BUILT TO PERFORM...

- Appealing design, Efficient drainage, Secure attachment
- Built-in Rainscreen eliminates a trip up the wall and facilitates drainage and drying
- Patent-Pending attachment Brackets allow panels to "Float" three-dimensionally with the building, helping protect against oil-canning
- Trusted & Proven 3M™ VHB™ architectural grade bond
- Custom Stick-On Trim System
- 3M™ VHB™ tape seals ALL fasteners, Eliminates unsealed fasteners
- Hidden fastening system Reduces total amount of fasteners/penetrations
- Class A Fire & Smoke rating: International Building Code (IBC) & NFPA 5000: Building Construction & Safety Code (NFPA 5000)
- ZERO off-site fabrication required - Eliminates shortages & delays!
- Custom Finish options that include Rust/Patina, Woodgrain & Stone!
- Custom Color Matching options to fit ANY projects needs! PVDF, SMP & Polyester paints available to prevent Scratching, Fading & Corrosion
- Embossing options that include Stucco, Cedar, Diamond & Driftwood
- COOLWALL® technology paints! Anti-Microbial paints!
- Will NOT Blowout & Absorb Moisture like fiber-cement will!
- Will NOT Crack or Delaminate like fiber-cement will!
- Up to 50% lighter than fiber-cement! Superior strength-to-weight ratio!
- Installs faster & easier than fiber-cement = increased production!
- 99% Recyclable! Made-in-America metal in stock & available!

### PLANK OPTIONS

- 7" exposure
- 12' & 16' lengths
- Custom lengths & widths available upon request!

**35-YEAR Transferrable Warranty!**

**READY TO ROCK?**

CALL 877.777.CLAD OR VISIT [ALBUILDSYSTEMS.COM](http://ALBUILDSYSTEMS.COM)



**VENTCLAD™**  
Patent Pending

## WALL SECTION DETAIL

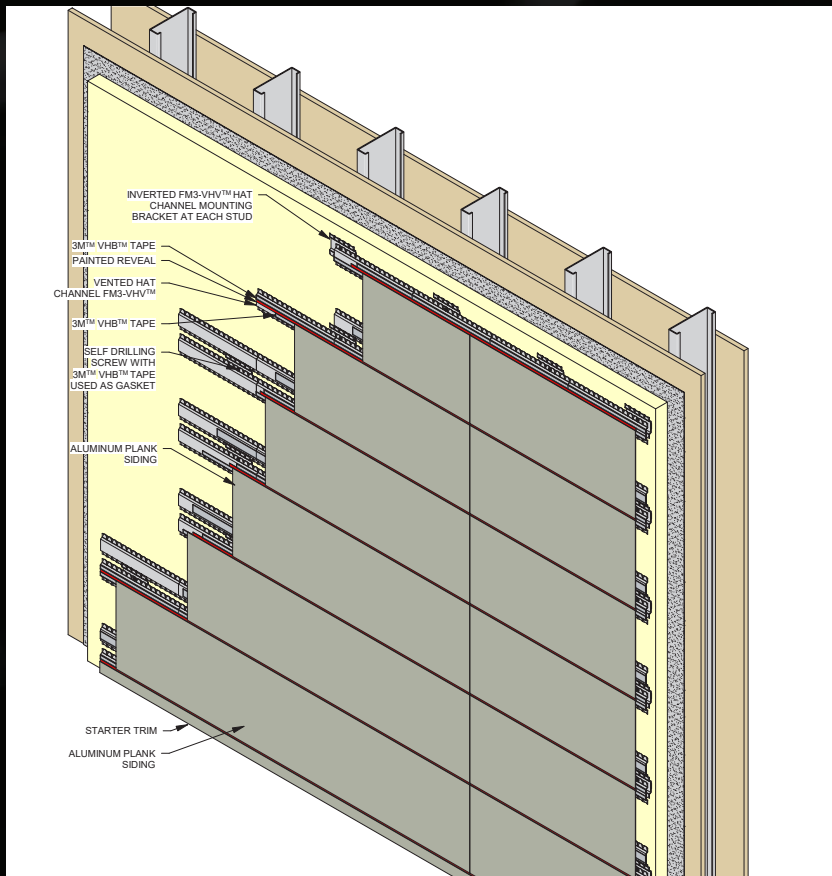
### PANELS (Lap, Panel, Plank)

- .040" to .050" aluminum skin
- 20ga or 24ga steel FM3-VHV corrugated furring
- .090" or .125" 3M™ VHB™ tape, .75" wide to 1.25" wide
- Dimensions:
  - Lap: 7" x 12' or 16'
  - Panel: 24", 36", 48" x 8', 10', 12'
  - Plank: 7" x 12' or 16'

### TRIM

- .040" to .050" aluminum skin
- 20ga or 24ga steel FM3-VHV corrugated furring (where necessary)
- .090" or .125" 3M™ VHB™ tape, .75" wide to 1.25" wide
- Dimensions:
  - Inside / Outside Corner: 2" x 2"
  - Window / Door: 2" x .375" (return)
  - Starter Strip: 1" x .375" (return)

All VentClad™ siding options are permanently adhered to our FM3-VHV™ Corrugated Furring channel via 3MTM VHB™ tape



VentClad™ "Stick-On" Trim with 3M™ VHB™ tape makes installation quick & easy while ELIMINATING fasteners

**READY TO ROCK?**

CALL 877.777.CLAD OR VISIT ALBUILDSYSTEMS.COM