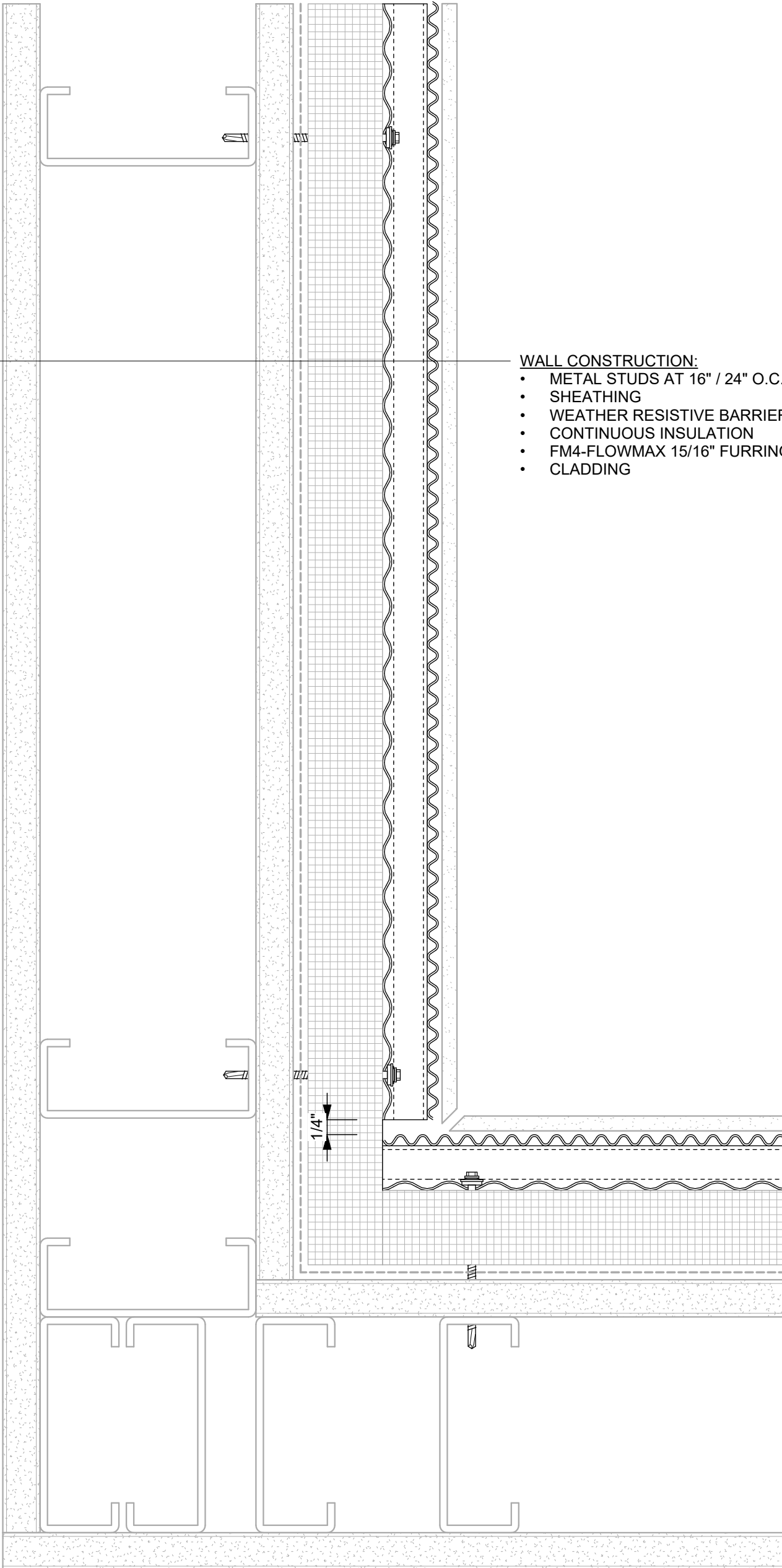


**WALL CONSTRUCTION:**

- METAL STUDS AT 16" / 24" O.C.
- SHEATHING
- WEATHER RESISTIVE BARRIER
- CONTINUOUS INSULATION
- FM4-FLOWMAX 15/16" FURRING
- CLADDING

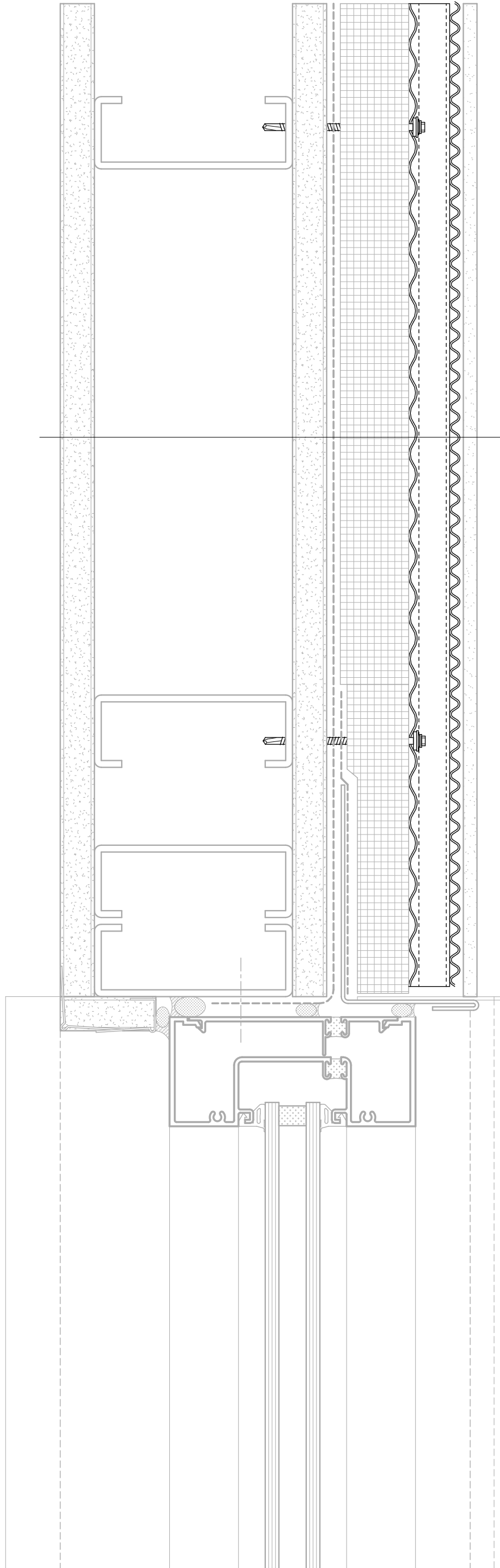
1/4"



**WALL CONSTRUCTION:**

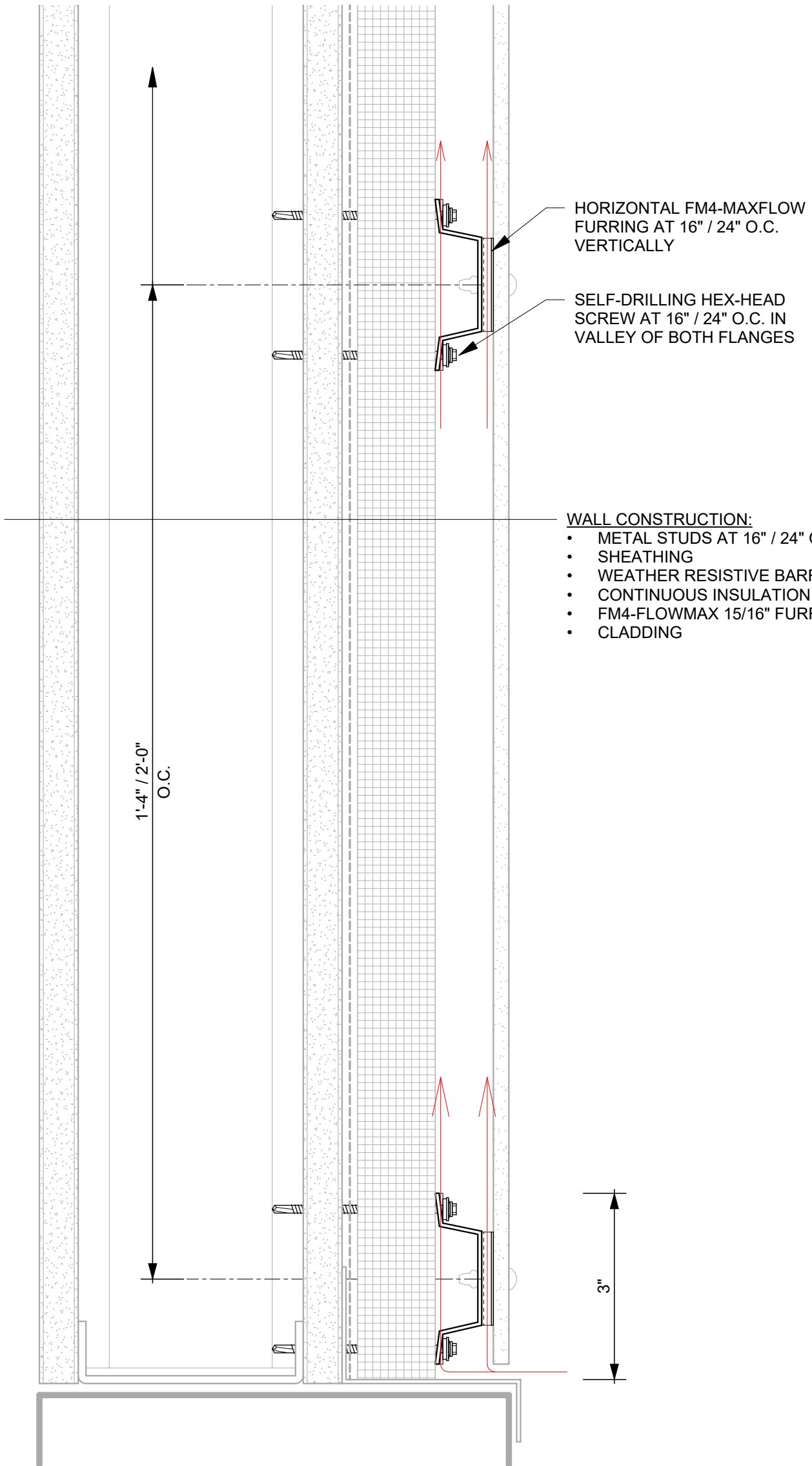
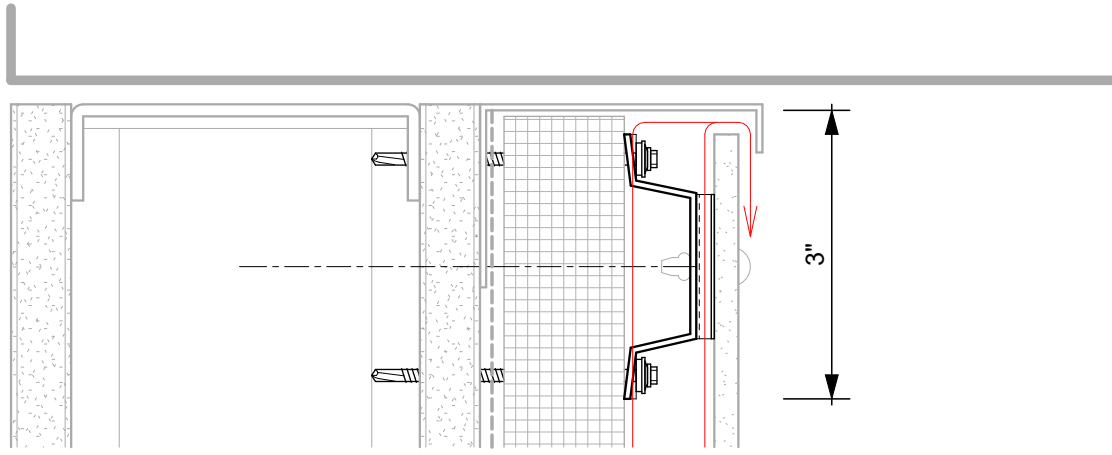
- METAL STUDS AT 16" / 24" O.C.
- SHEATHING
- WEATHER RESISTIVE BARRIER
- CONTINUOUS INSULATION
- FM4-FLOWMAX 15/16" FURRING
- CLADDING

1/4"



**WALL CONSTRUCTION:**

- METAL STUDS AT 16" / 24" O.C.
- SHEATHING
- WEATHER RESISTIVE BARRIER
- CONTINUOUS INSULATION
- FM4-FLOWMAX 15/16" FURRING
- CLADDING



HORIZONTAL FM4-MAXFLOW FURRING AT 16" / 24" O.C. VERTICALLY

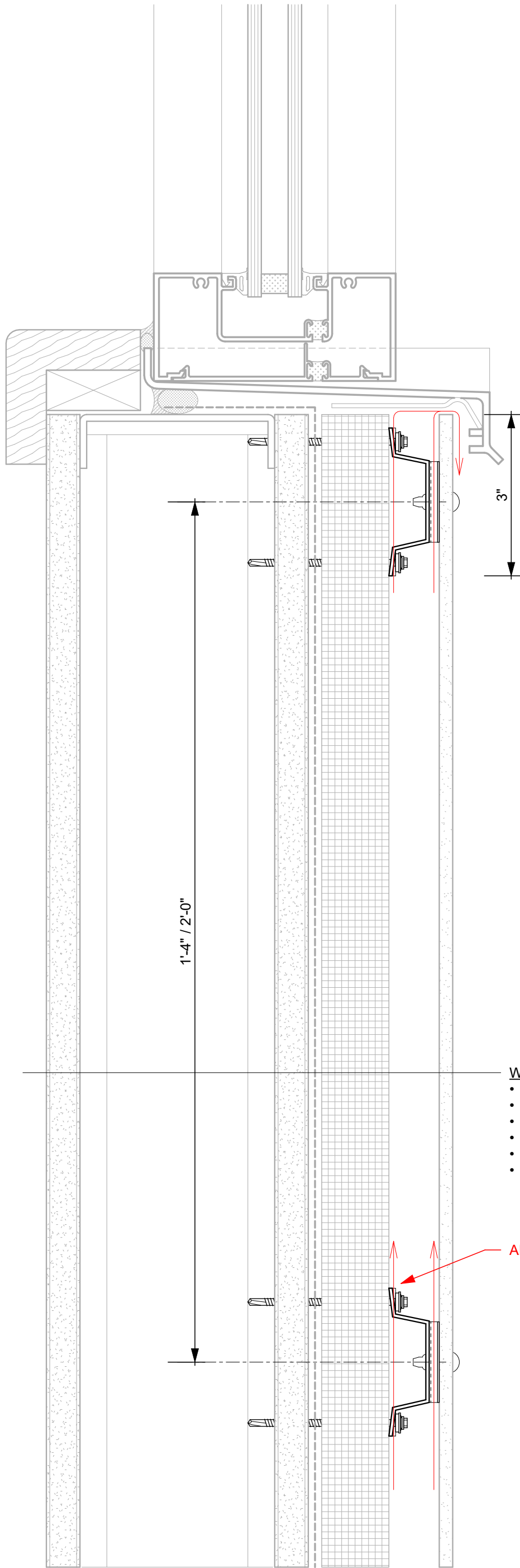
SELF-DRILLING HEX-HEAD SCREW AT 16" / 24" O.C. IN VALLEY OF BOTH FLANGES

- WALL CONSTRUCTION:**
- METAL STUDS AT 16" / 24" O.C.
  - SHEATHING
  - WEATHER RESISTIVE BARRIER
  - CONTINUOUS INSULATION
  - FM4-FLOWMAX 15/16" FURRING
  - CLADDING

1'-4" / 2'-0" O.C.

3"

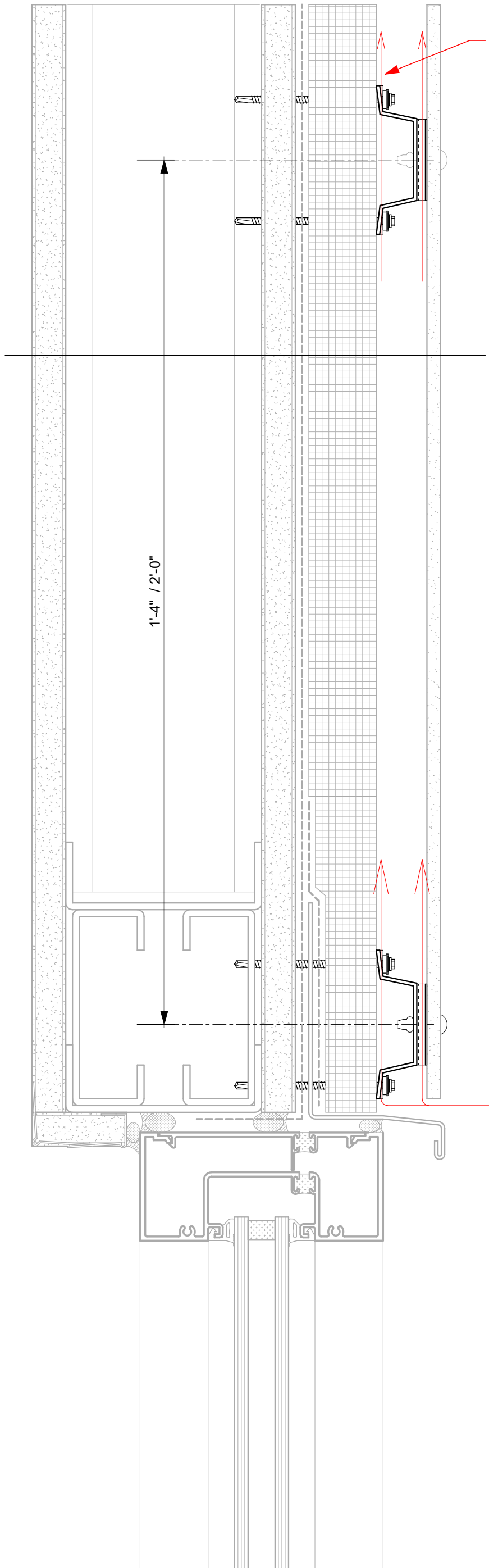
FM4-MAXFLOW / HORIZONTAL  
WALL SYSTEM SECTION



**WALL CONSTRUCTION:**

- METAL STUDS AT 16" / 24" O.C.
- SHEATHING
- WEATHER RESISTIVE BARRIER
- CONTINUOUS INSULATION
- FM4-FLOWMAX 15/16" FURRING
- CLADDING

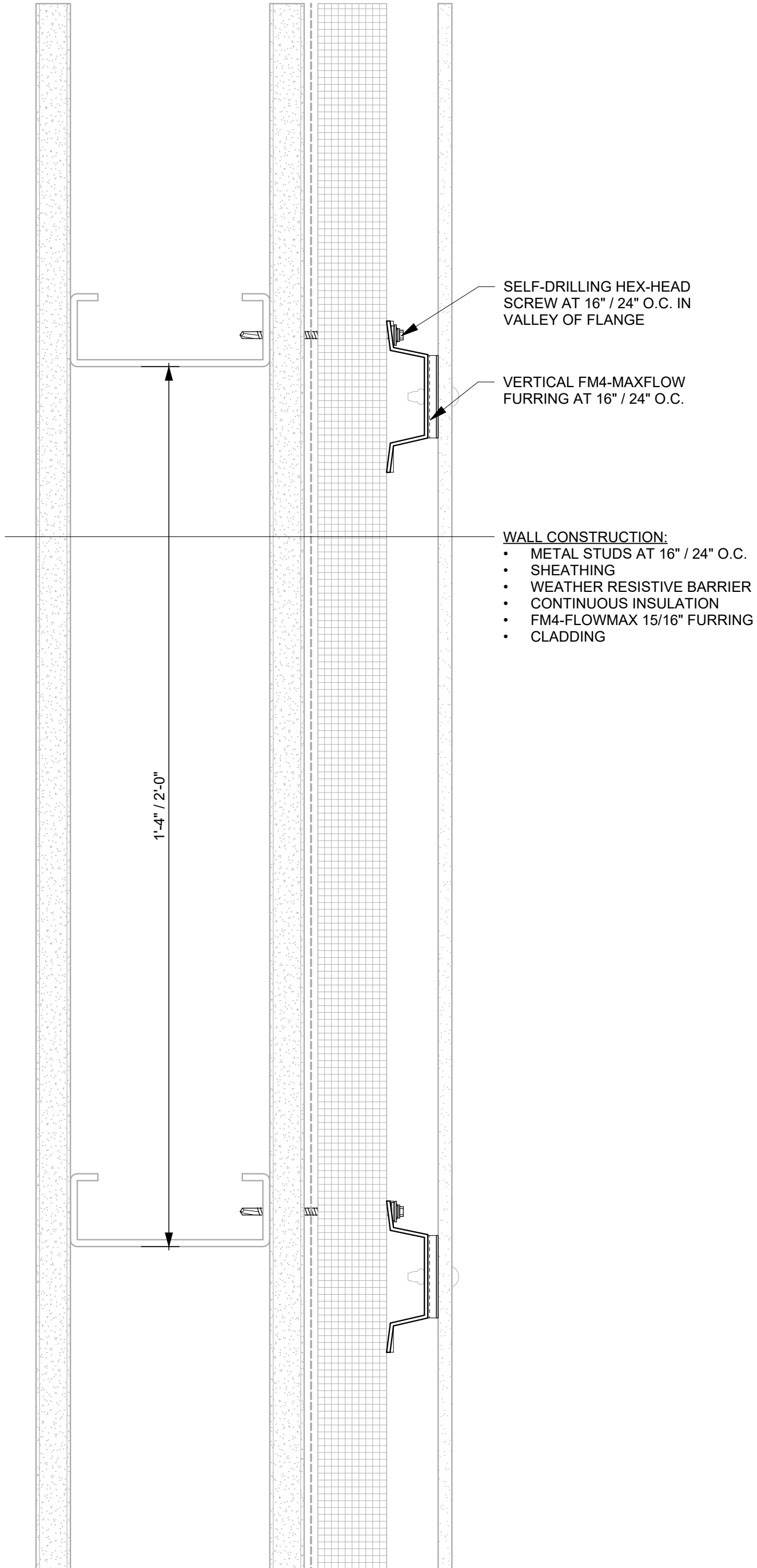
**AIR FLOW**



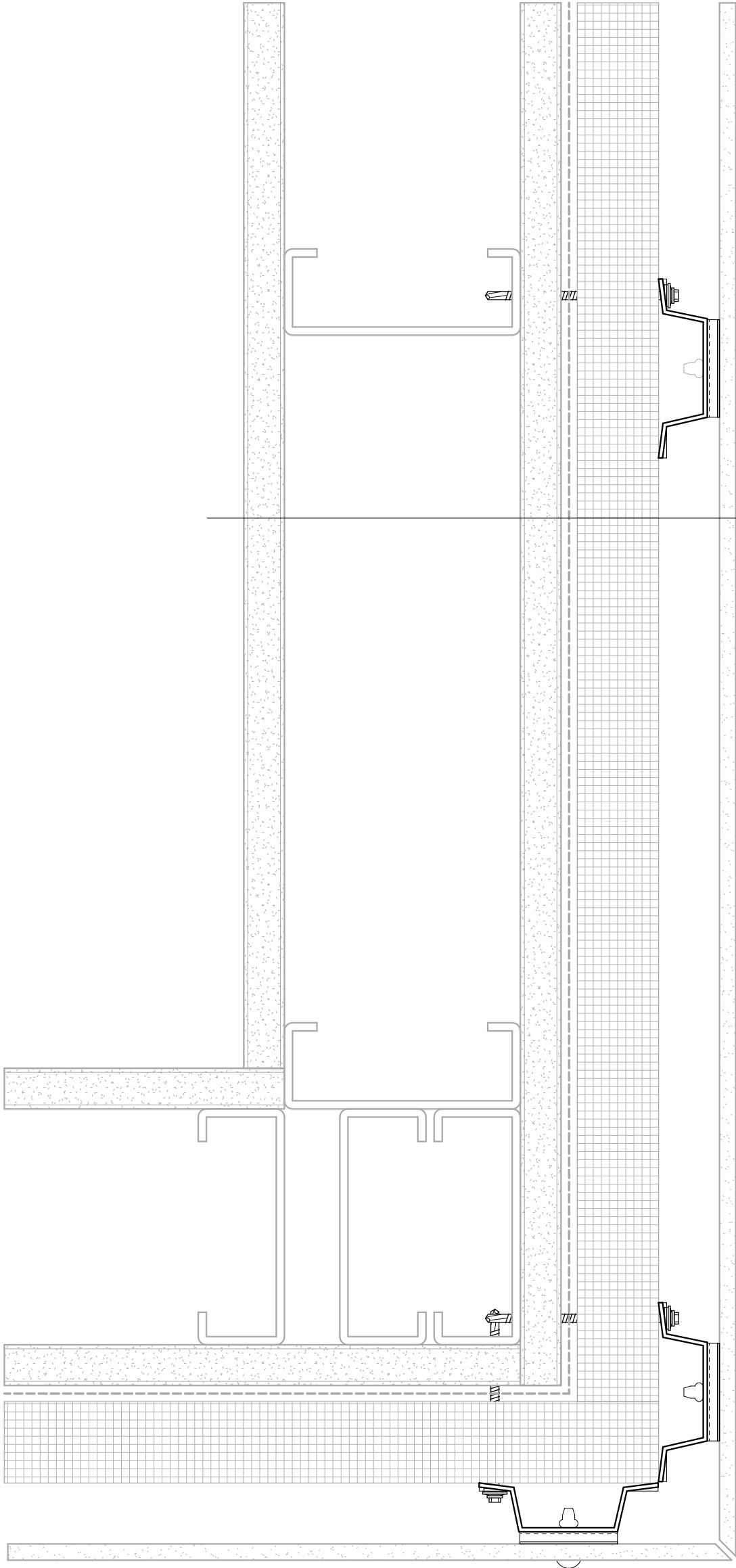
**WALL CONSTRUCTION:**

- METAL STUDS AT 16" / 24" O.C.
- SHEATHING
- WEATHER RESISTIVE BARRIER
- CONTINUOUS INSULATION
- FM4-FLOWMAX 15/16" FURRING
- CLADDING



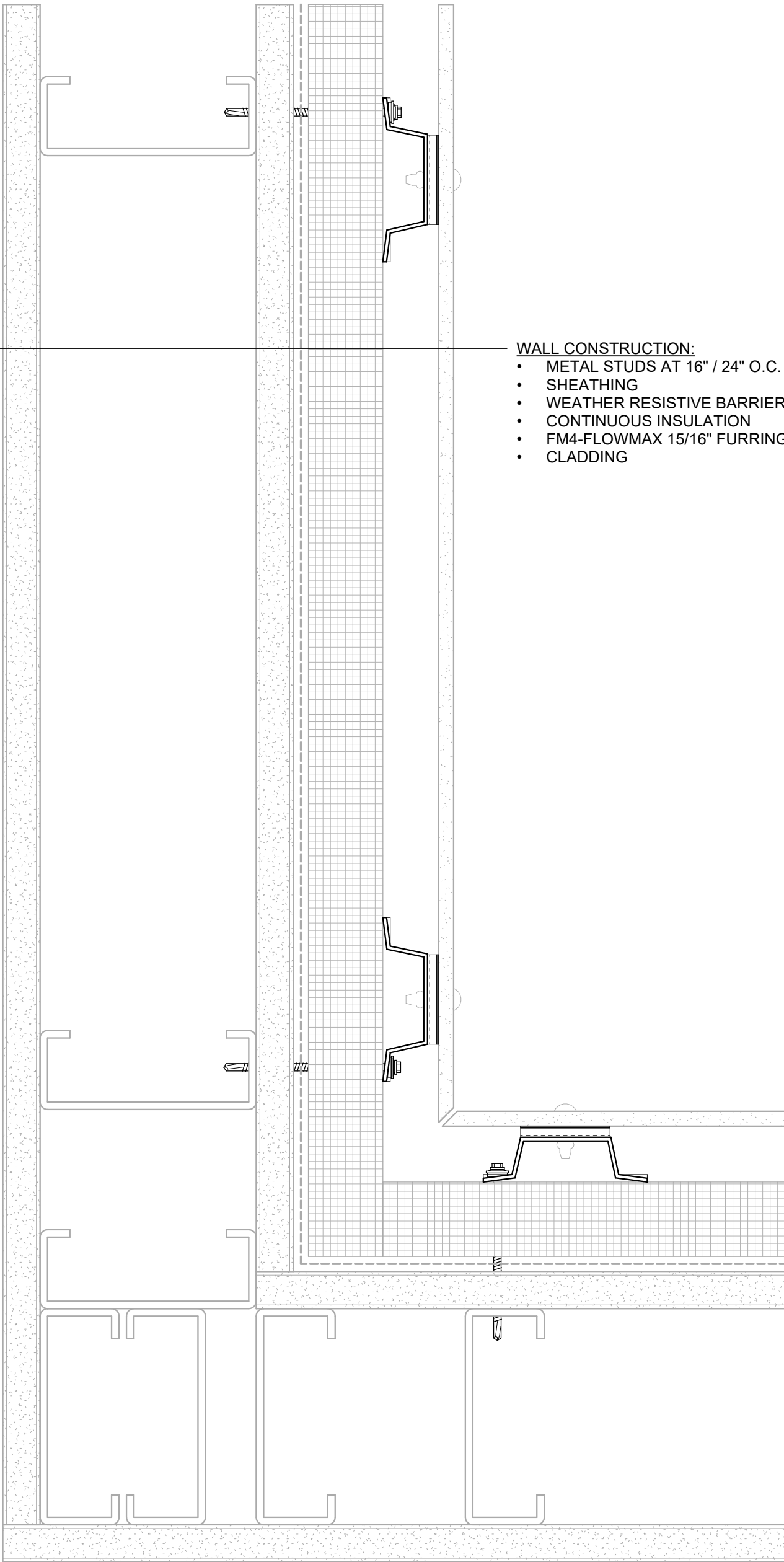






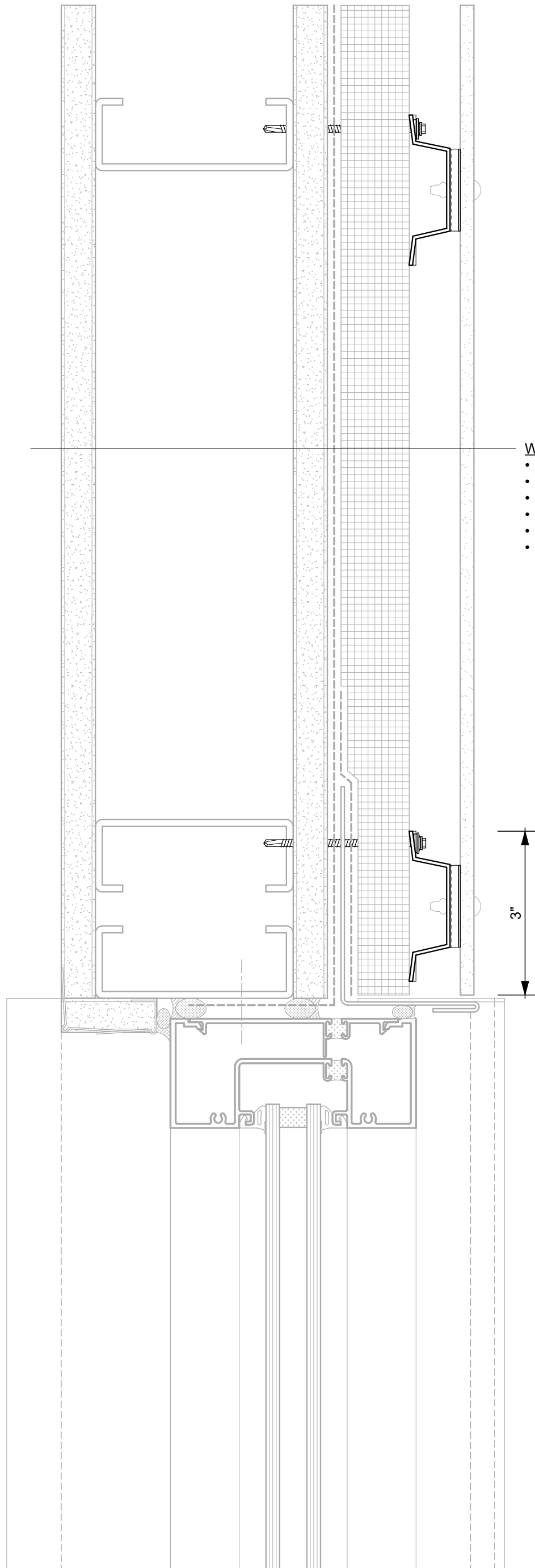
**WALL CONSTRUCTION:**

- METAL STUDS AT 16" / 24" O.C.
- SHEATHING
- WEATHER RESISTIVE BARRIER
- CONTINUOUS INSULATION
- FM4-FLOWMAX 15/16" FURRING
- CLADDING



**WALL CONSTRUCTION:**

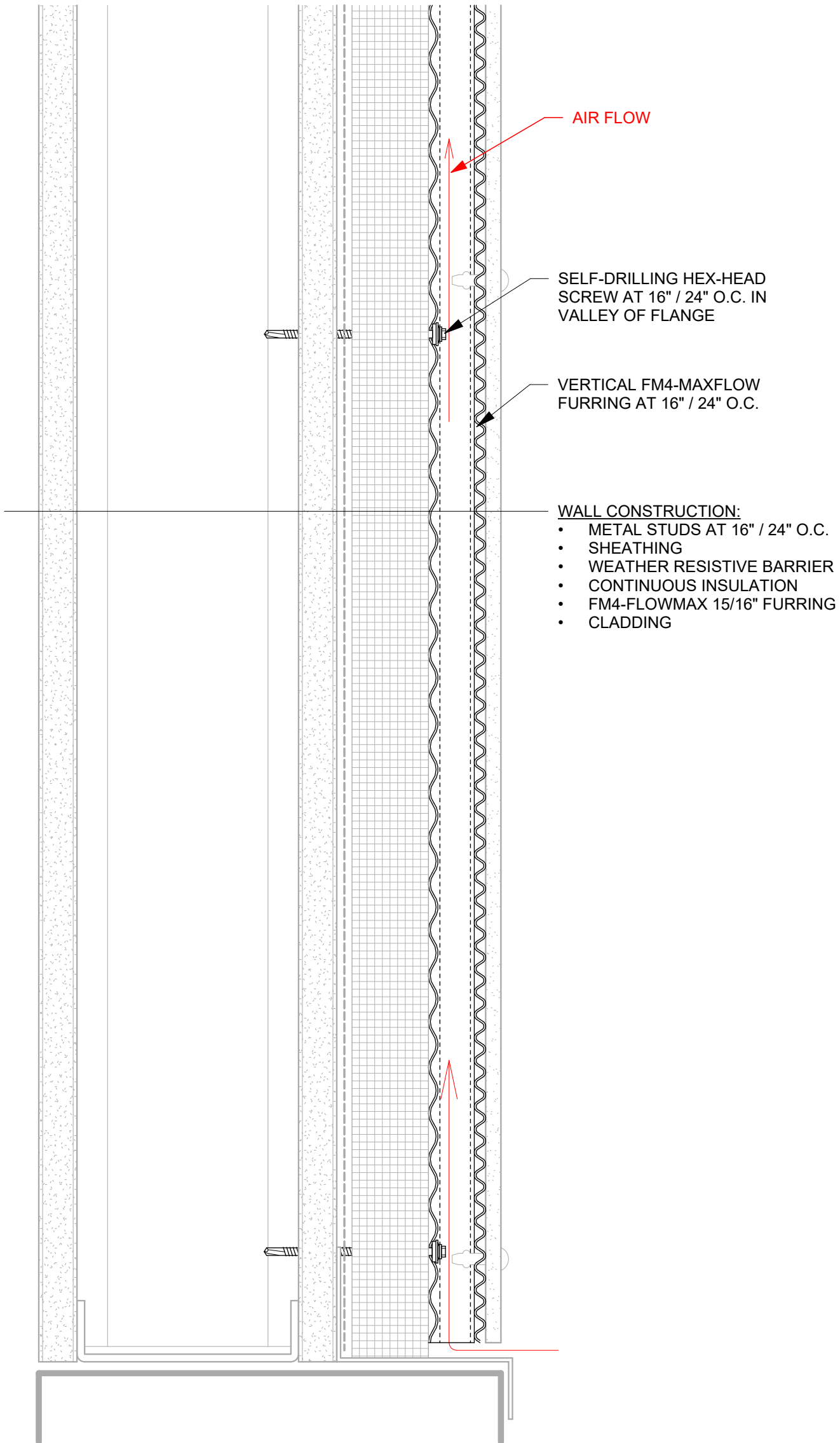
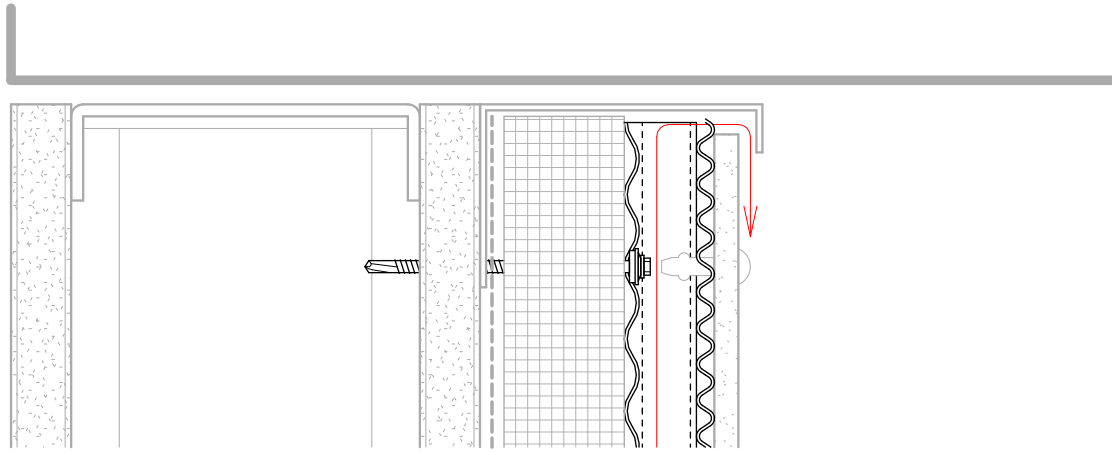
- METAL STUDS AT 16" / 24" O.C.
- SHEATHING
- WEATHER RESISTIVE BARRIER
- CONTINUOUS INSULATION
- FM4-FLOWMAX 15/16" FURRING
- CLADDING

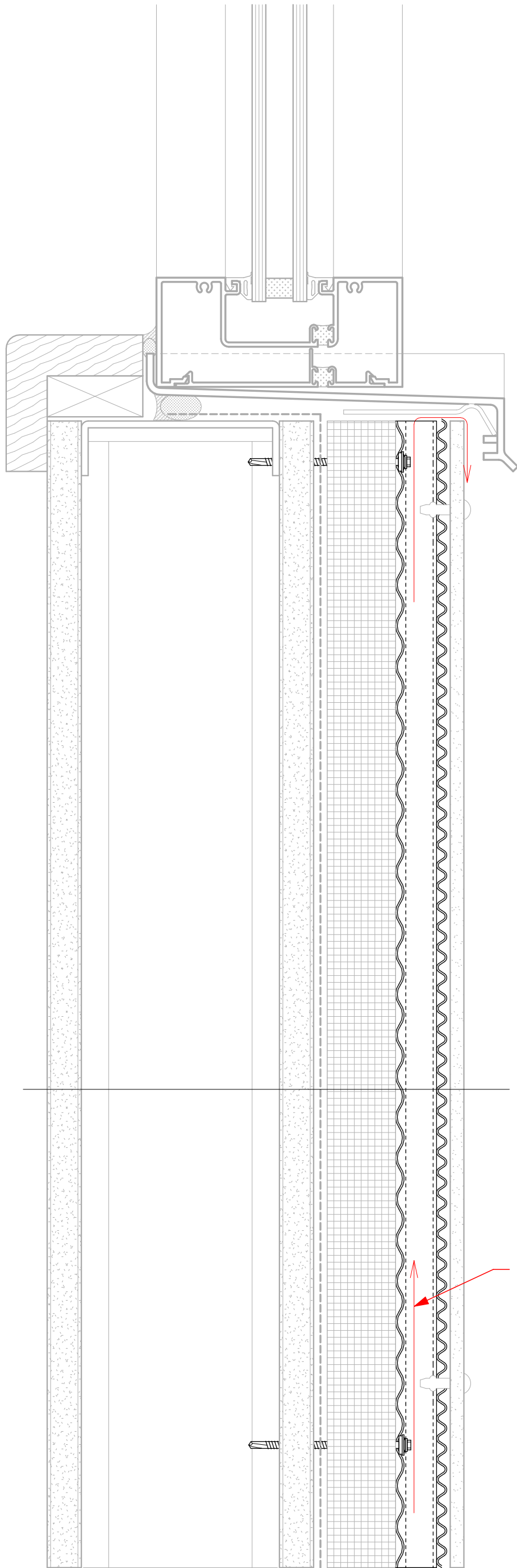


**WALL CONSTRUCTION:**

- METAL STUDS AT 16" / 24" O.C.
- SHEATHING
- WEATHER RESISTIVE BARRIER
- CONTINUOUS INSULATION
- FM4-FLOWMAX 15/16" FURRING
- CLADDING

3"

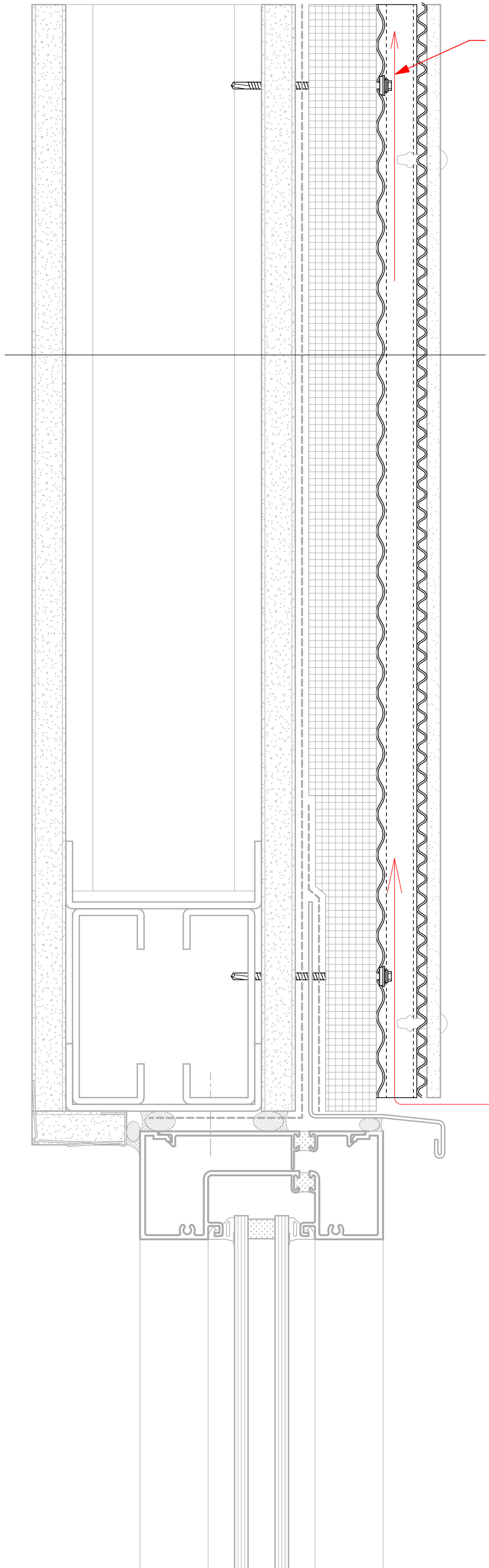




**WALL CONSTRUCTION:**

- METAL STUDS AT 16" / 24" O.C.
- SHEATHING
- WEATHER RESISTIVE BARRIER
- CONTINUOUS INSULATION
- FM4-FLOWMAX 15/16" FURRING
- CLADDING

AIR FLOW



AIR FLOW

**WALL CONSTRUCTION:**

- METAL STUDS AT 16" / 24" O.C.
- SHEATHING
- WEATHER RESISTIVE BARRIER
- CONTINUOUS INSULATION
- FM4-FLOWMAX 15/16" FURRING
- CLADDING